

**Tour de Hokkaido 2022**

# **Pandemic Severity Assessment**

---

**2022.8.8**

**Tour de Hokkaido Association**



**ROYCE'**



# **1. Overview**

## **2. Infection status in Japan and Hokkaido**

## **3. Risk assessment of "Tour de Hokkaido 2022"**

# 1. Overview

- **“Event management guidelines after the release of ‘Declaration of State of Emergency’ “(2021/9/5)**  
**Japan Cycling Federation**
- **“Event management guidelines after the release of ‘Declaration of State of Emergency’ ”(2021/11/5)**  
**Japan Sports Association / Japan Para Sports Association**
- **“Rules to be applied for the organisation of road cycling competitions in the context of the COVID-19 pandemic” (2022/6/24 ) UCI**  
**UCI WorldTour – UCI Women’s WorldTour – UCI ProSeries , Class 1 and Class 2 races , Continental Road Championships , UCI Road World Championships , UCI Nations Cup**
- **Vaccine and testing package system outline (2021/11/19)**  
**Japanese government**

The four indicators shown in the UCI rules are:

- ① **the total number of newly confirmed cases** of COVID-19 per 100,000 population in the last 14 days at regional level;
- ② **the ‘test positivity rate’**, that is, the percentage of positive tests among all tests for COVID 19 infection carried out during the last week;
- ③ **the ‘testing rate’**, that is, the number of tests for COVID-19 infection per 100 000 population carried out during the last week.
- ④ **the basic reproductive number (R)** is an excellent parameter for characterising human-to human transmission.

The pandemic severity is represented by a color code.

Color	Number of Positive Cases per 100,000 in the last 14 days.	Test positively rate
GREEN	less than 25	less than 4%
ORANGE	less than 50	4% or more
	25 -150	less than 4%
RED	50 - 500	4% or more
	150 -500	
DARK RED	higher than 500	

“ Rules to be applied for the organisation of road cycling competitions in the context of the COVID-19 pandemic “  
Feb 21, 2022 UNION CYCLISTE INTERNATIONALE (UCI)

Table-1 Color Code

Table-2 Level judgment and transition index (Hokkaido)

Level	Placement (Japan)	Indicator (Hokkaido)	Response (Hokkaido)
<b>Level 4 (Avoided stage)</b>	Medical care reserved for necessary cases, yet unable to take in COVID-19 cases	Occupied beds are expected to be over 100%	○ Stronger countermeasures will be implemented (Ex.) Lockdown, Closure of restaurants, closure of facilities, xxx events, xxx public transport, partly telework, etc.
<b>Level 3 (Strengthening measures stage)</b>	Medical care reserved for only necessary cases	Occupied beds (or severe cases) are over 50%	○ Strong countermeasures under state of emergency or quasi-emergency will be implemented
<b>Level 2 (Cautious stage)</b>	Increase in new patients and shortage of vacancies in medical system	① Occupied beds (or severe cases) are over 20% ② Number of new patients (per week) is over 15 per 100,000 people ③ Number of patients in recovery is over 20 per 100,000 people ④ All ①~③ indicators are met	○ Avoid high-risk situations and activities ○ If spread of infection continues for certain period of time (approx. 2 weeks,) there will be countermeasures implemented, as well as the declaration of quasi-emergency ○ If spread of infection continues further, situation will move up to stage 3 and state of emergency will be declared
<b>Level 1 (Maintained stage)</b>	General medical systems are stable and able to treat COVID-19 cases	New COVID-19 patients	○ Continue general measures to prevent infections, especially avoiding high-risk situations and activities
<b>Level 0 (Zero patient stage)</b>	Maintaining the number of zero new patient	Maintaining zero new patient for certain period of time (approx. 2 weeks)	○ Promote general measures to prevent infections

## 2. Infection status in Japan and Hokkaido

- (1) Number of Positive Cases
- (2) Number of Death
- (3) Number of Severe cases
- (4) Reproductive Number
- (5) Status in the Race Area
- (6) Level Judgment of Hokkaido
- (7) Holding an event in Hokkaido
- (8) Assessment criteria of UCI

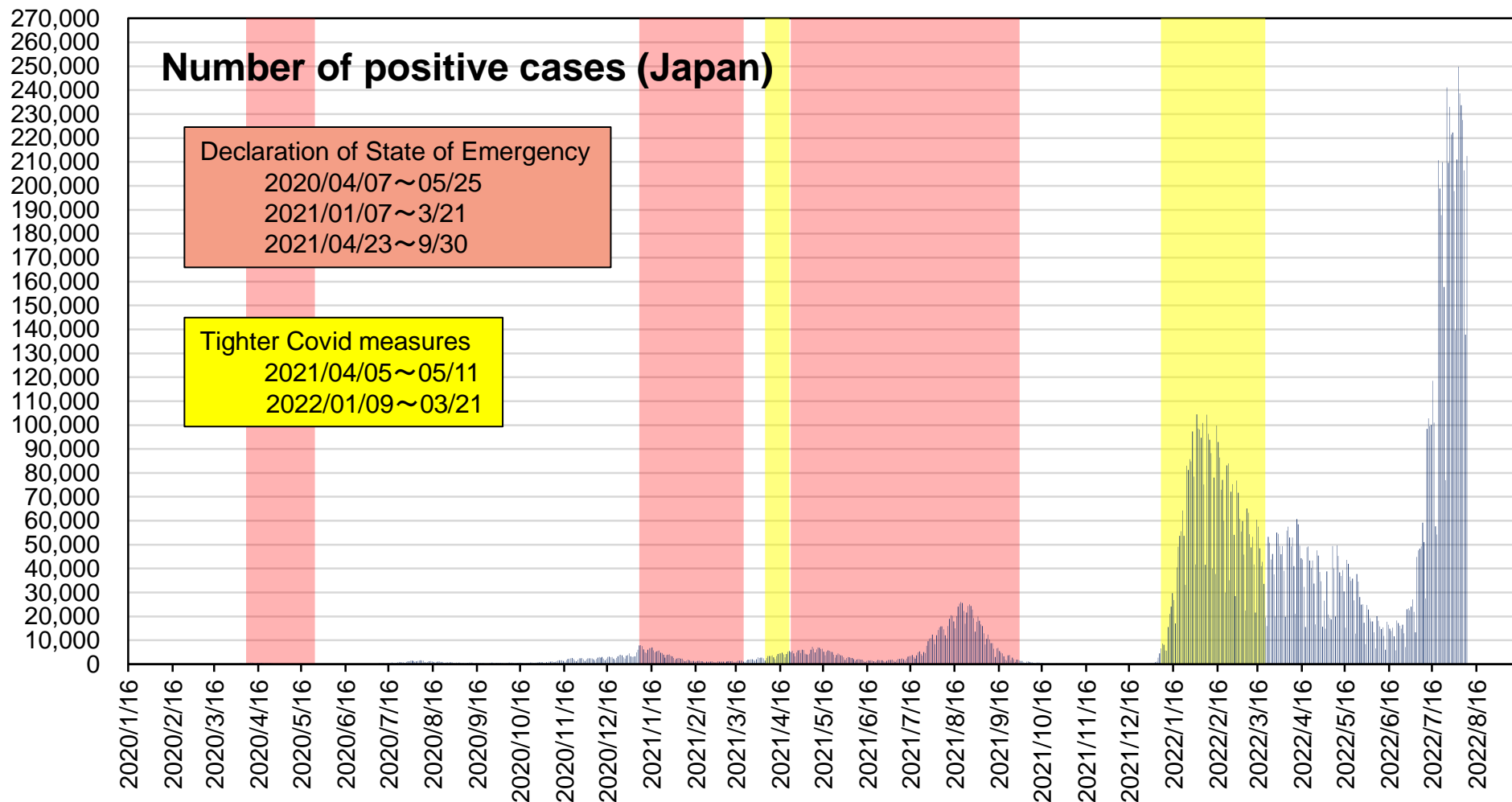


Fig-1 Number of Positive Cases (Japan)

2022/08/08



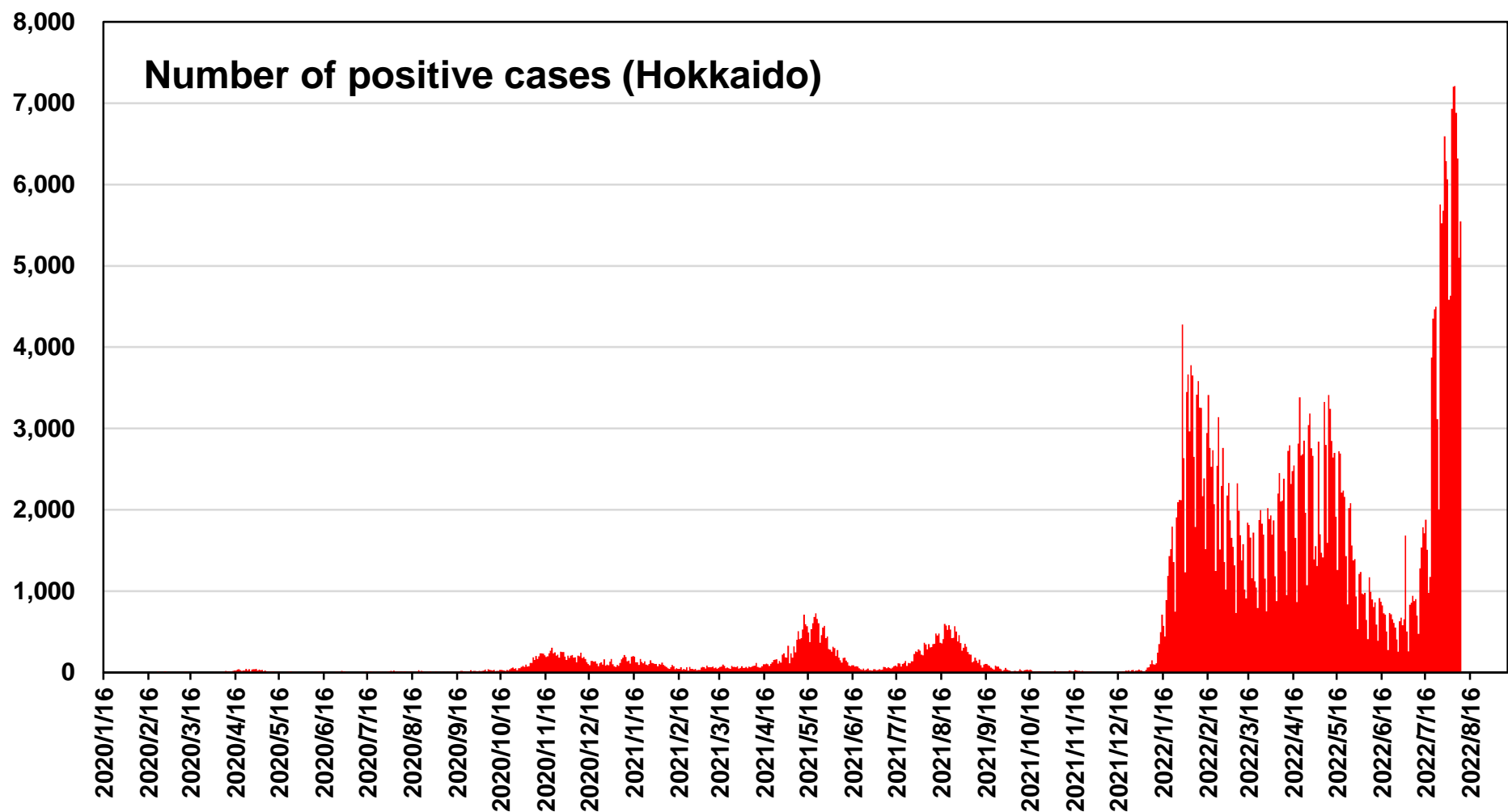


Fig-2 Number of Positive Cases (Hokkaido)

2022/08/08

# (2) Number of Death(Japan)

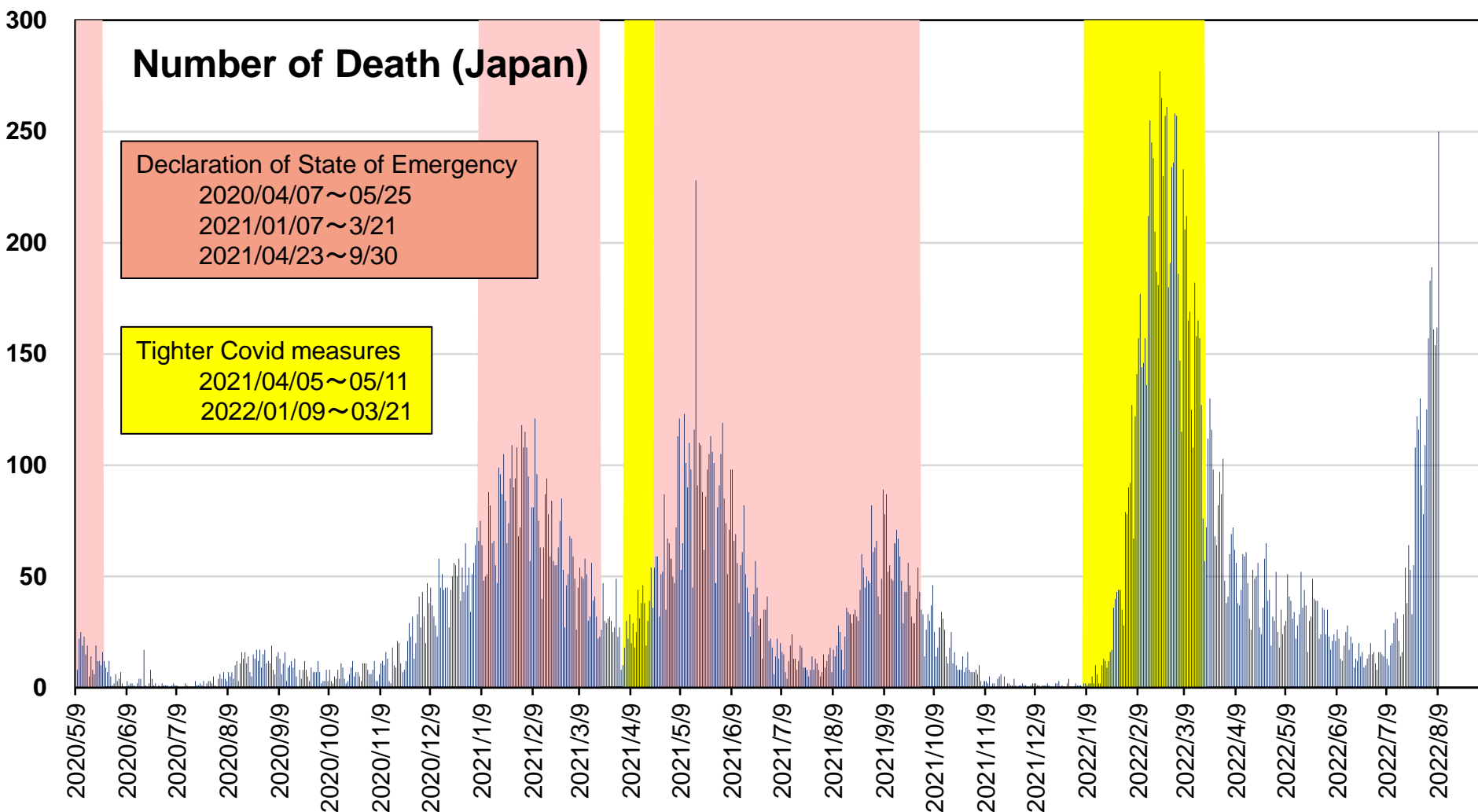


Fig-3 Number of Death (Japan)

2022/08/08

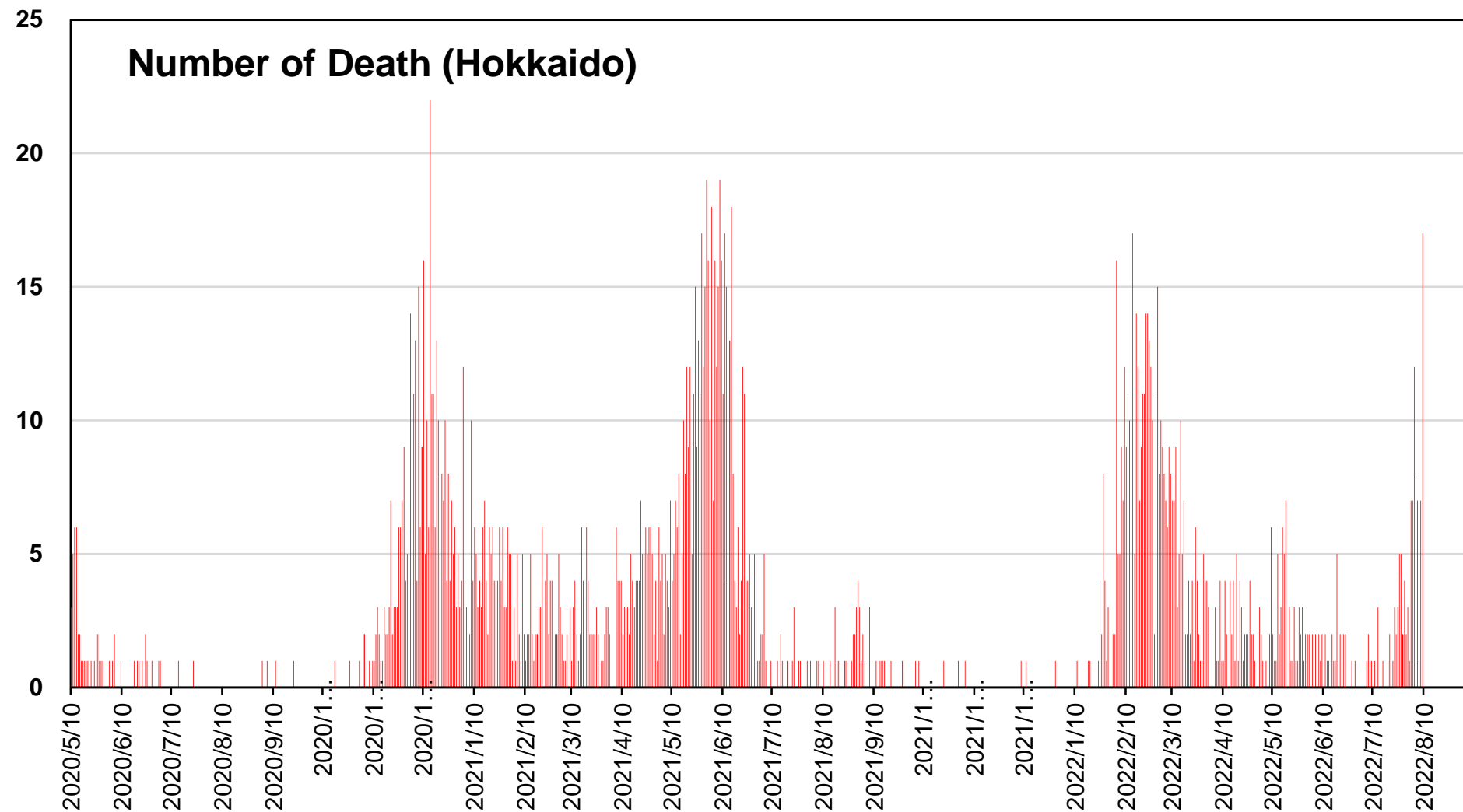


Fig-4 Number of Death (Hokkaido)

2022/08/08

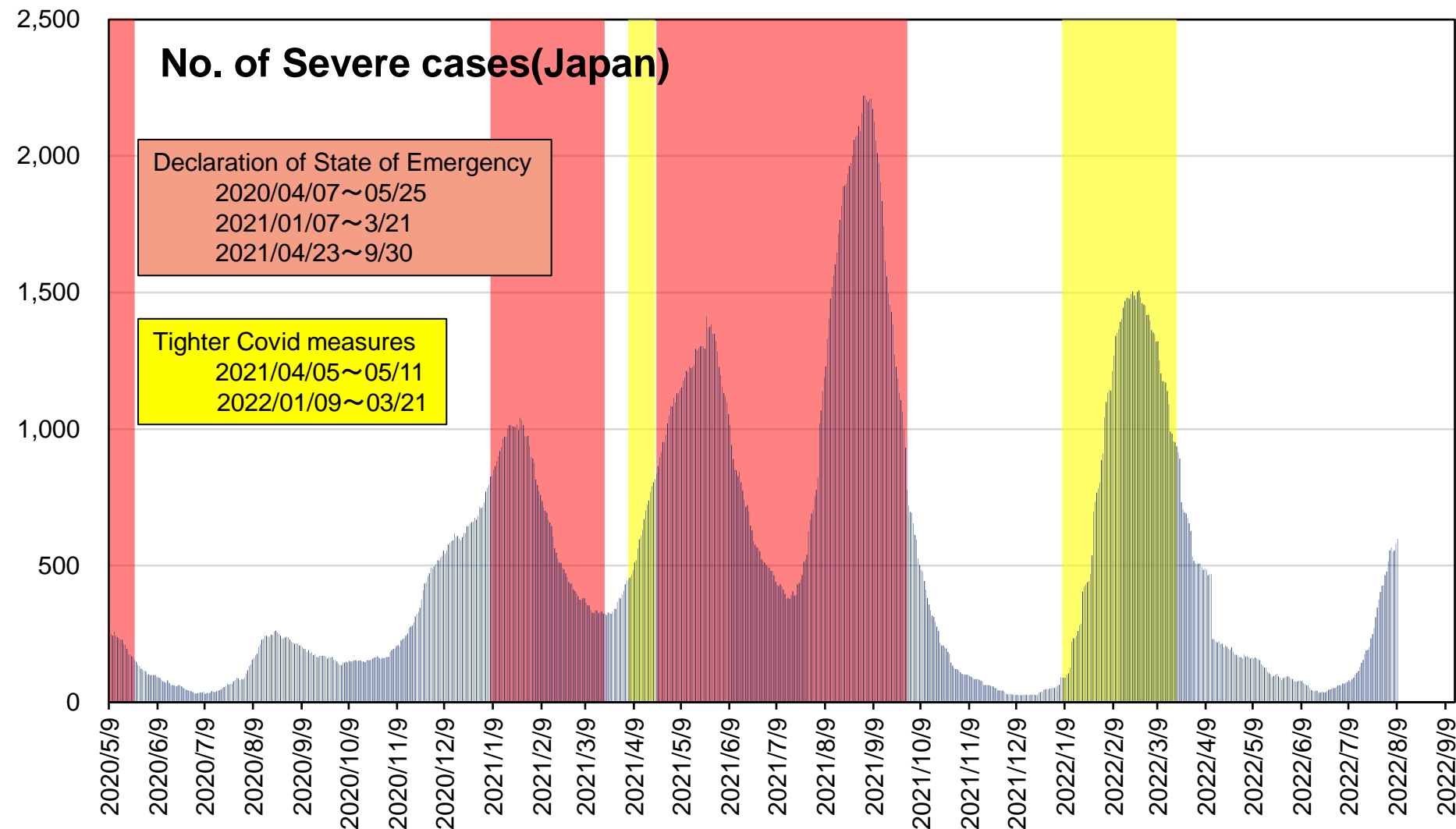


Fig-5 Number of Severe Cases (Japan)

2022/08/08

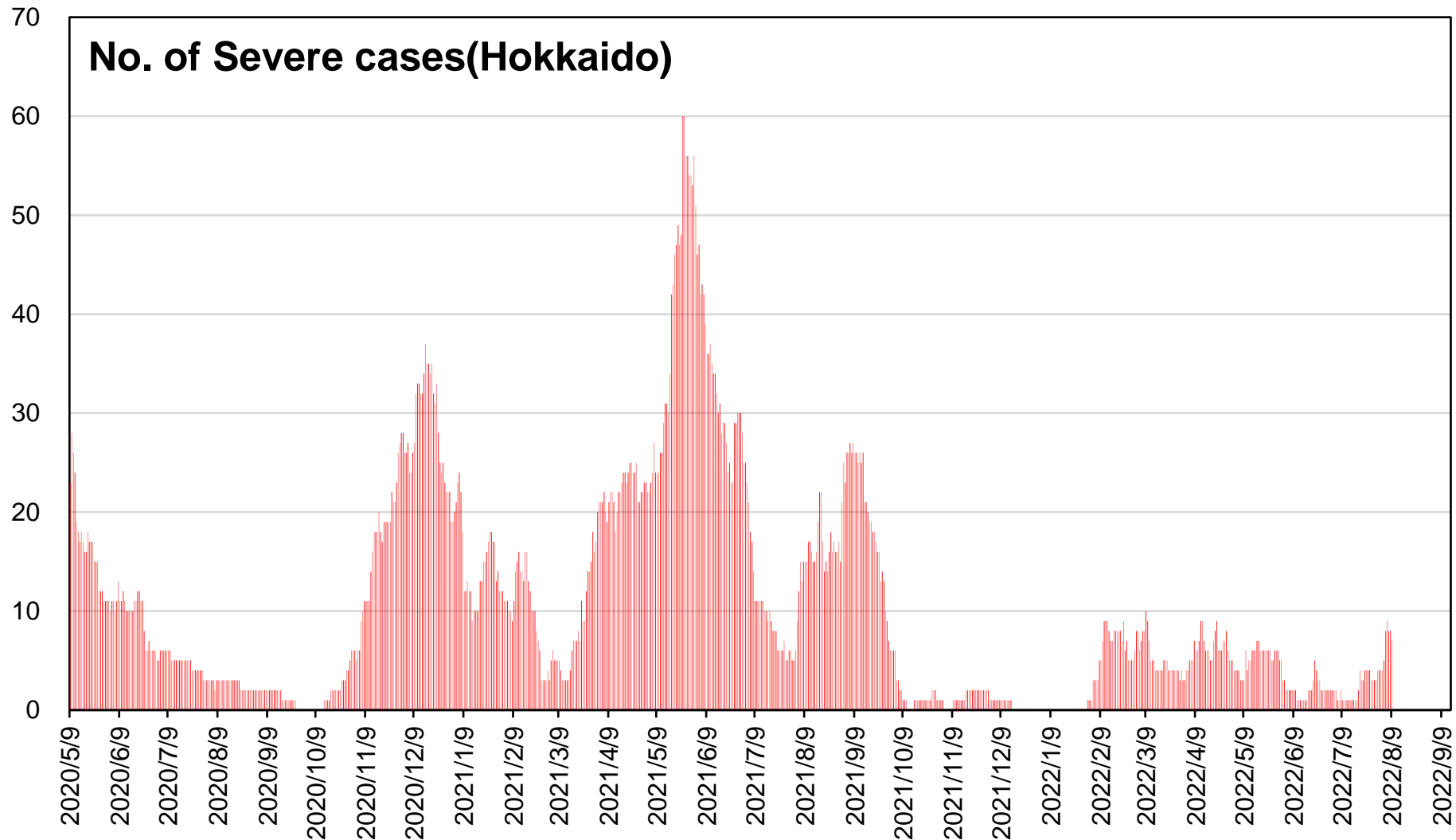
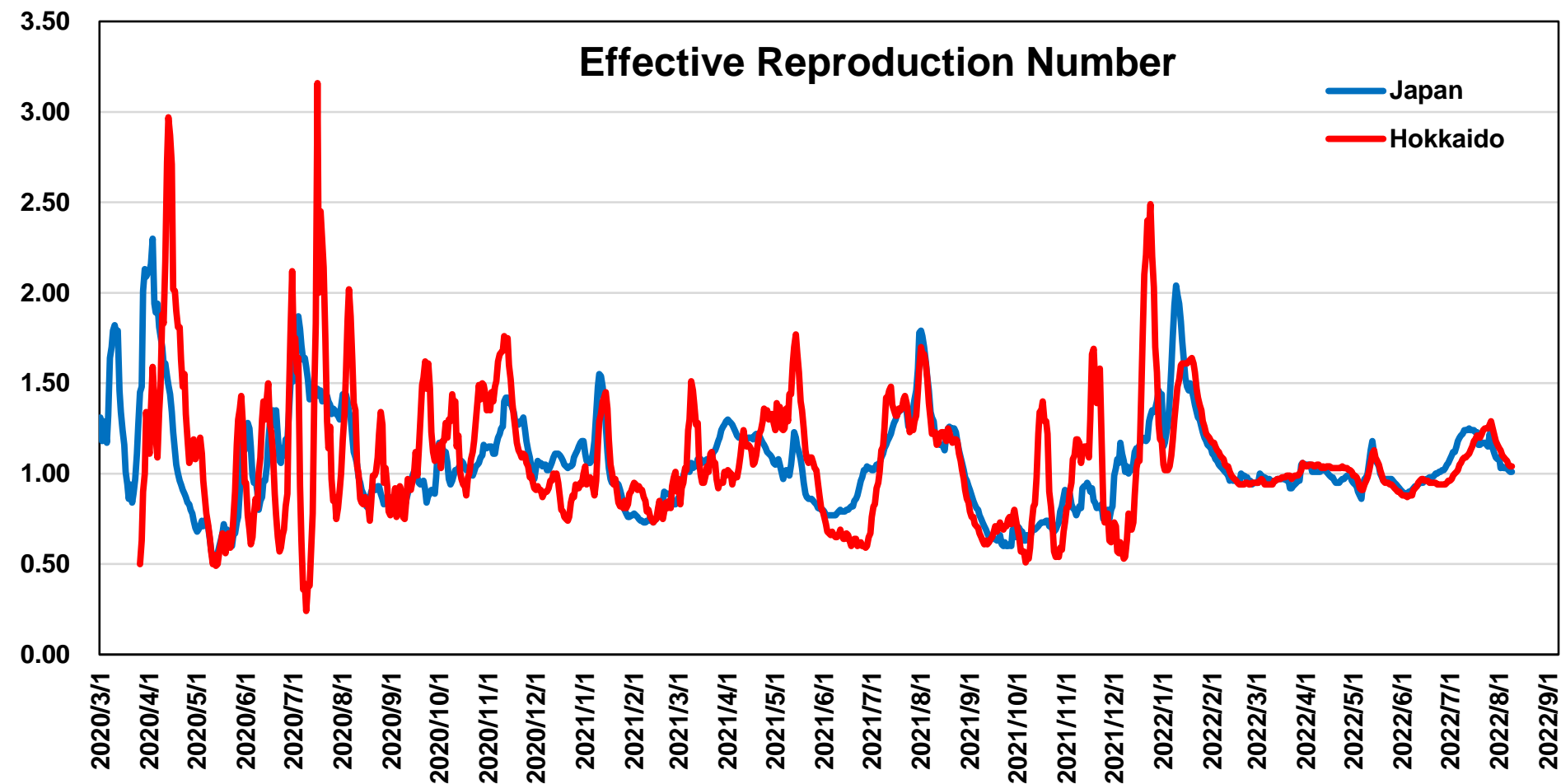


Fig-6 Number of Severe Cases (Hokkaido)

2022/08/08

# (4) Reproductive Number



# (5) Status in the Race Area

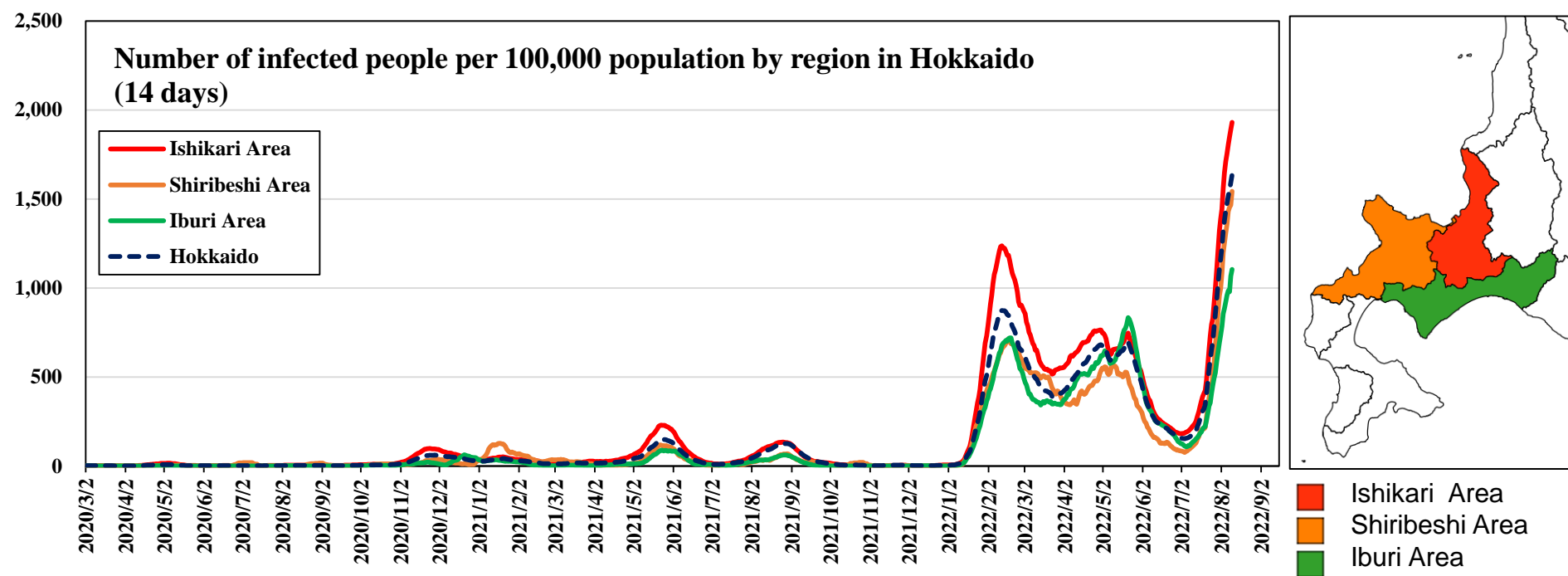


Table-3 Infection status in the race area

2022/08/08

Area	Ishikari Area	Shiribeshi Area	Iburi Area	Hokkaido
Number of positive Cace	1,850.4	1,453.4	979.6	1,551.0

Table-4 Level judgment and transition index

Level	Situation	Measures
<b>Level 4 (Avoided stage)</b>	Medical care reserved for necessary cases, yet unable to take in COVID-19 cases	"Disaster medical" response Prefectural support and mutual coordination
<b>Level 3 (Strengthening measures stage)</b>	Medical care reserved for only necessary cases	The national and prefectural governments are strongly calling. Strong measures in metropolitan areas and prevention of spread in rural areas.
<b>Level 2 (Cautious stage)</b>	Increase in new patients and shortage of vacancies in medical system	Strengthen the health center system and secure beds
<b>Level 1 (Maintained stage)</b>	General medical systems are stable and able to treat COVID-19 cases	Vaccines / basic measures
<b>Level 0 (Zero patient stage)</b>	Maintaining the number of zero new patient	

Table-5 Status of Hokkaido

2022/08/08

Prefecture		Medical care system load					Infection status				
	Level	Percentage of occupied beds	Percentage of occupied beds from severe cases	hospitalization rate	hospitalization rate(compared to last week)	Serious cases(compared to last week)	PCR positive rate	Number of new cases			Cases with untraceable infection route
								1 week, 100,000 people	Compared to last week	Compared to the week before last	
Hokkaido	2	33%	6%	1%	0.93	1.92	65.8	847	1.17	1.86	54%



Hokkaido announced “Measures to prevent the spread of COVID-19 during Summer” on August 9. Event restrictions in the Hokkaido area are listed below.

北海道は8月9日「夏の感染拡大防止パッケージ」を発表した。イベントの開催についての要請について以下のとおり記載されている。

The upper limit of the number of people is the smaller of the upper limit of the number of people and the accommodation rate. (It is necessary to meet both conditions)

Infection control safety plan	Maximum number of people	Accommodation rate of capacity	
		No loud	Within 100% (Appropriate spacing if there are no seats)
No	5,000 people or 50% or less capacity	Loud voice	Within 50% (Appropriate spacing if there are no seats)
Yes	Up to capacity	Within 100% (Assuming no loud voice)	

## COLOR CODE

Color	Number of Positive Cases per 100,000 in the last 14 days.	Test positively rate
GREEN	less than 25	less than 4%
ORANGE	less than 50	4% or more
	25 -150	less than 4%
RED	50 - 500	4% or more
	150 -500	
DARK RED	higher than 500	

Table-7 Assessment criteria of UCI

	Japan	Hokkaido	Remarks
① No. of Positive cases	2,354.1	1,614.4	7/26 ~ 8/8、14days per 100,000 people
② Test Positivity Rate	49.0%	65.8%	2022/8/8
③ Testing Rate	1,595	1,282	8/2 ~ 8/8、7days per 100,000 people
④ Basic Reproduction Number	1.01	1.04	2022/8/8

# 3. Assessment of the pandemic severity

One month before “Tour de Hokkaido 2022”, the infection status in Hokkaido is “Level 2 (Cautious stage)”. According to Hokkaido's event restrictions, "Tour de Hokkaido" is not subject to any special restrictions.

However, when applied to the UCI evaluation, it is a serious infection situation equivalent to “dark red”, so it is a situation that the maximum level of infection prevention measures should be taken and held.

Based on these, the Tour de Hokkaido 2022 must apply the UCI regulations' "Enforcement of the various measures" at the maximum level and take measures based on the Japanese government's "Vaccine and testing package system".

「ツール・ド・北海道2022」の開催1か月前における、北海道の感染状況は「レベル2(警戒を強化すべきレベル)」と判断されている。北海道の「イベント開催要請」にあてはめると、ツール・ド・北海道の規模であれば特段の制限を受ける状況ではない。

但し、UCI評価にあてはめると「ダークレッド」に相当する深刻な感染状況となっているため、最大レベルで感染防止対策を講じて開催すべき状況と評価される。

これらをふまえると、UCI規則に示された対策を最大レベルで適用するとともに、日本のワクチン検査パッケージ制度を踏まえた対策を講じる必要がある。

Enforcement of the various measures	Area		
	Dark-red, Red	Orange	Green
<b>A) Preparation before the Event</b>			
1. Appointment of a Coordinator	Org	Org	
2. Accommodation of teams in hotels	Org	Org	
3. "Isolation" rooms	Org		
4. Prevention procedures (teams)	Team	Team	
5. Biology laboratory resources	Team		
<b>B) Procedures for entering team bubbles</b>			
- Clinical detection of virus	Team	Team	
- COVID-19 testing	Team	Team	
<b>C) Ensure the protection of the team bubbles</b>			
1. Hygienic procedures information	Org		
2. Separate pathways	Org		
3. Physical distancing in communal spaces	Org		
4. Presence of spectators; - limit spectators	Org	Org	
- safe distance(rider)	Org	Org	
- wear a mask (spectators)	Org		
5. Cleaning and disinfection (communal areas)	Org		
6. Provide waste bins	Org	Org	
7. Health check on race morning	Team	Team	
8. Adapt the registration procedures	Org	Org	
9. Adapt the feed zones	Org		
10. Regulate the use of vehicles	Org		
11. Hug ban after the finish line.	Team		

Enforcement of the various measures	Area		
	Dark-red, Red	Orange	Green
Special case of stage races COVID-19 testing during the event	Org	Org	
12. Awards ceremony - restrict the number of riders	Org		
- wear face masks	Org		
- place the podium 1.5m apart	Org	Org	
- create 1.5 m pre-podium boxes	Org		
- individual award recovery system	Org		
- riders prevented from each other	Org		
-limit the number of photographers	Org		
- one-way traffic plan	Org	Org	
13. Adapt the anti-doping station	Org	Org	
<b>D) Management of suspected COVID-19 cases</b>			
- appointment of a COVID doctor	Org		
- coordination with health authorities	Org		
- provide a clean mask	Org	Org	Org
- provide PPE for medical staff	Org	Org	
- management procedures of COVID+ cases	Org	Org	

## Color Categories

	Mandatory
	Recommended
	Desired

## Term

Org	Organizers
Team	Team

対策方法	Area		
	Dark-red, Red	Orange	Green
A)大会前準備			
1. COVID-19 Coordinator任命等	Org	Org	
2. ホテル宿泊:ライフバブル確保	Org	Org	
3. 隔離室確保	Org		
4. チームの予防手順	Team	Team	
5. PCR検査施設IIに関する情報提供	Team		
B) チームバブルに入る手順			
- 臨床検出	Team	Team	
- COVID-19検査			
C) チームバブル保護			
1.各自の衛生手順と防護具の情報提供	Org		
2.分離した通路確保	Org		
3.共通エリアのフィジカルディスタンス	Org		
4.観客対策;	Org	Org	
-観客制限(スタート・フィニッシュエリア)			
-選手と観客の安全距離確保	Org	Org	
-観客のマスク着用	Org		
5.共通エリアの清掃・消毒	Org		
6.汚染物廃棄用のゴミ箱用意	Org	Org	
7.朝の健康チェック(コロナ問診票等)	Team	Team	
8.出走登録プロセス適合理化	Org	Org	
9.フィードゾーンの適正化	Org		
10.主催者およびチーム車両の使用規制	Org		
11.フィニッシュライン通過後ハグ禁止	Team		

対策方法	Area		
	Dark-red, Red	Orange	Green
ステージレースの特別な場合 大会中のCOVID-19検査	Org	Org	
12. 表彰式の調整	Org		
- 表彰ライダー数の削減			
- アスリートのマスク着用	Org		
- 表彰台ブロックを1.5m離して配置	Org	Org	
- 1.5 mの表彰台ボックスを作成	Org		
- 手指消毒とセルフサービス	Org		
- ライダー相互の接触回避	Org		
-カメラマン数の制限	Org		
- 表彰台周辺の歩行者一方通行計画	Org	Org	
13. アンチドーピングステーションと手順の 適合理化	Org	Org	
D) COVID-19が疑われる症例の管理			
- レースドクター任命	Org		
- 地方保険当局との連携	Org		
- 病人にマスク提供	Org	Org	Org
- 医療f班への個人用防護具提供	Org	Org	
- 陽性症状の管理手順	Org	Org	

色の凡例

	必須
	推奨
	望ましい

用語の凡例

Org	オーガナイザー
Team	チーム